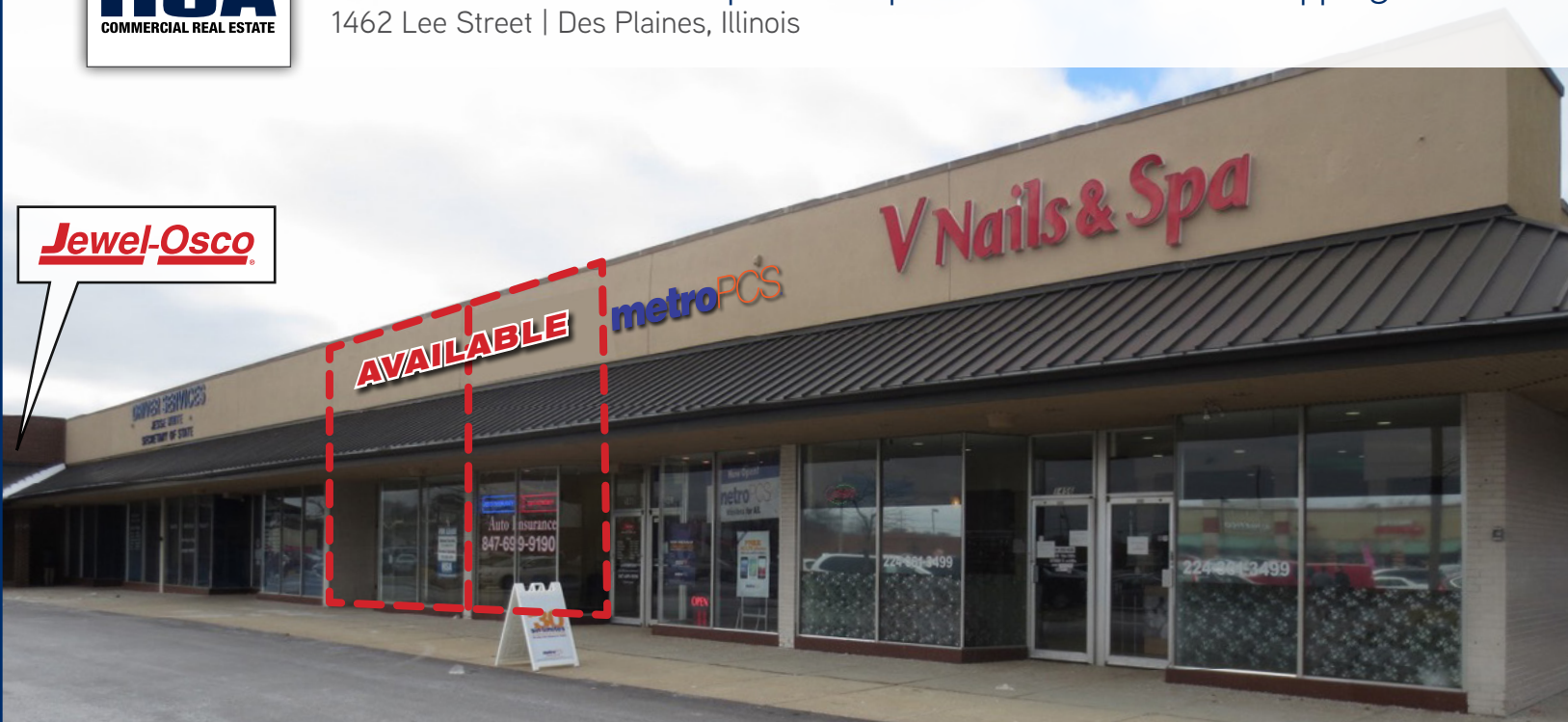


FOR LEASE Small Shop Retail Space in Jewel-Osco Shopping Center
 1462 Lee Street | Des Plaines, Illinois

Jewel-Osco

Property Profile

Space Available	1,200 and 2,409 SF units (can be combined for 3,600 SF)
Area Retailers	Jewel-Osco, Dominick's, Kmart, Aldi
Traffic Counts	21,812 VPD (Lee Street) 24,718 VPD (Oakton Street)

Demographics

	1 mile	3 miles	5 miles
Population	16,728	111,600	296,565
Average HHI	\$70,610	\$78,163	\$84,094
Households	6,446	42,971	115,507
Employment	7,939	71,768	226,552

Property Highlights

- Two small-shop spaces remaining in Jewel-Osco anchored shopping center next to new Dept. of Motor Vehicles office!
- Great convenience-oriented and automotive co-tenancy in the market
- New tenants include a V Nails & Spa and Metro PCS

Contact

Michael Havdala
 p 312.458.4318
 mhavdala@hsacommercial.com

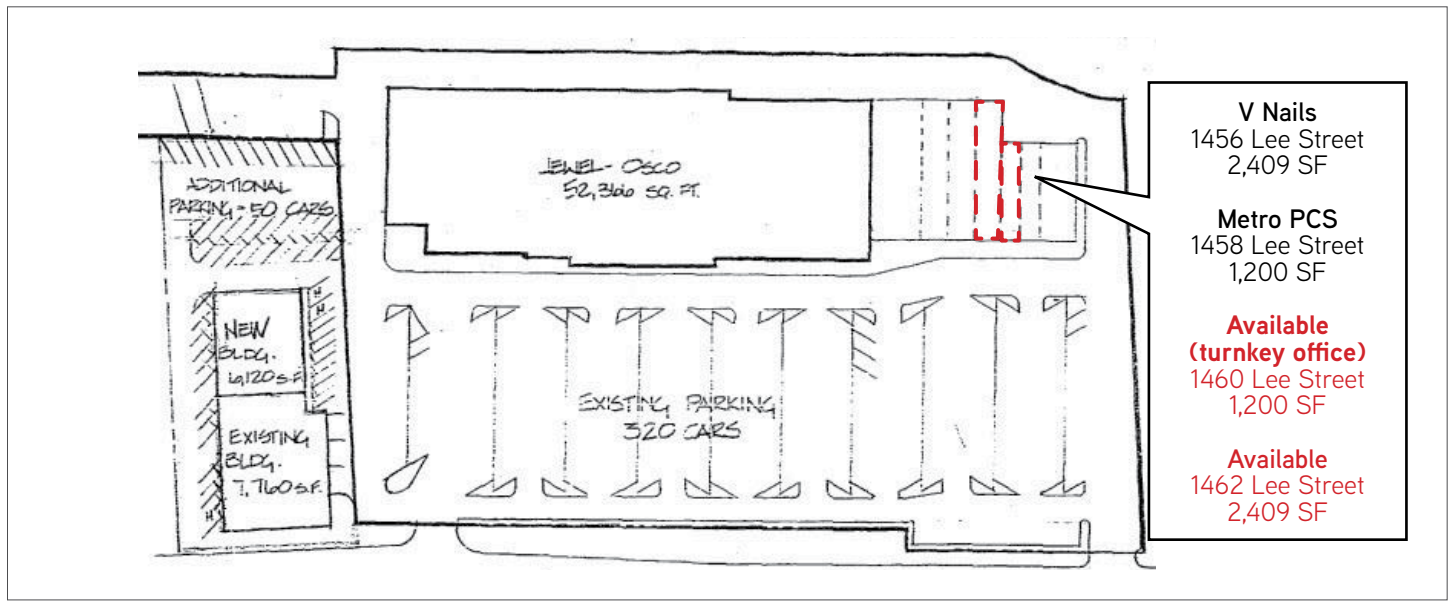
Brenton Schrader
 p 312.458.4392
 bschrader@hsacommercial.com



FOR LEASE Small Shop Retail Space in Jewel-Osco Shopping Center

1462 Lee Street | Des Plaines, Illinois

Market Aerial



HSA Commercial: 100 S Wacker Drive, Suite 950 | Chicago, Illinois 60606 | www.hsacommercial.com

Above information is subject to verification and no liability for errors or omissions is assumed. Price is subject to change and listing may be withdrawn without notice.