

# THE MAYFAIR COLLECTION

WAUWATOSA, WISCONSIN

**9,200 SF Flagship Full-Service  
Restaurant Building**



**JOIN THESE  
GREAT RETAILERS  
AND BUSINESSES**

**WHOLE  
FOODS**  
MARKET

NORDSTROM  
**rack**

**DICK'S**  
SPORTING GOODS

**DSW**  
SHOE  
WAREHOUSE

**ULTA**  
BEAUTY

**OLD NAVY**

**J. CREW**  
FACTORY

**corner  
bakery**  
CAFE

**HOMESWOOD  
SUITES**  
— Hilton —

*HomeGoods*

**BOMBERS**

**SMOKE & SHACK**

Plus: Over 1,000 Proposed  
Luxury Apartments!

**HSA**  
COMMERCIAL REAL ESTATE

HSA Commercial, Inc.  
100 South Wacker Drive, Suite 950 | Chicago, Illinois 60606  
[www.hsacommercial.com](http://www.hsacommercial.com)







# NEW RESTAURANT OPPORTUNITIES AT THE MAYFAIR COLLECTION







## 9,200 SF Restaurant Opportunity

- **Full-service restaurant space ideal for steakhouse, Italian restaurant, brewpub, Asian restaurant, or event venue!**
- Shell construction now complete
- Located at the main entrance to The Mayfair Collection
- Flagship, round-house style building design
- Outdoor seating area included
- Convenient access to surface and structured parking
- Rooftop signage visible from 141,000 VPD on Highway 45
- Join the dynamic and eclectic mix of restaurants at The Mayfair Collection including ABV Social, AJ Bombers, Pizza Man, Taqueria El Jefe, Cafe Grace, Smoke Shack, Corner Bakery Cafe, and Osgoods!

*West Elevation*

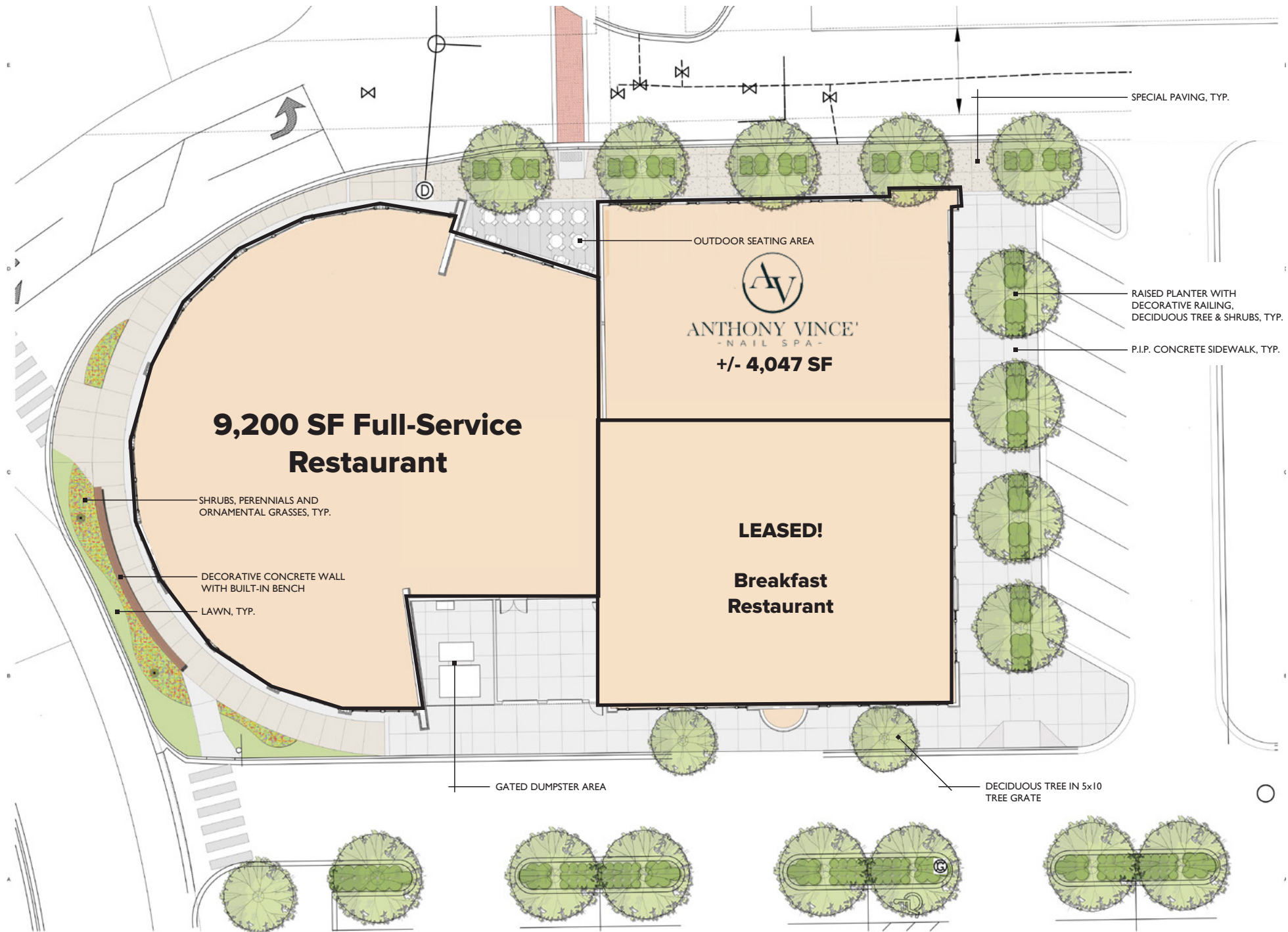


*Interior*



**THE MAYFAIR COLLECTION**  
WAUWATOSA, WISCONSIN





**THE MAYFAIR COLLECTION**  
WAUWATOSA, WISCONSIN

**Restaurant & Small Shop  
Opportunities Available**



# WHAT IS NEXT AT THE MAYFAIR COLLECTION?



PHASE V  
PROPOSED  
CORPORATE OFFICE

PHASE II - COMPLETE  
146-ROOM HOTEL

SYNERGY  
APARTMENTS  
269 UNITS  
NOW OPEN!

PHASE IV  
PROPOSED  
220-UNIT  
SENIOR TOWER

PHASE II - COMPLETE  
WHOLE FOODS

PHASE I - COMPLETE  
FASHION RETAIL

SITE





# THE MAYFAIR COLLECTION

WAUWATOSA, WISCONSIN

11250 W Burleigh Street | Wauwatosa, Wisconsin

**OWNED / DEVELOPED BY**



**RESIDENTIAL DEVELOPMENT BY**



**ARCHITECTURE**



**CHRIS THOMAS**

312.519.9624

[cthomas@toadesigns.com](mailto:cthomas@toadesigns.com)

**RETAIL LEASING**



**TIM BLUM**

312.683.7256

[tblum@hsacommercial.com](mailto:tblum@hsacommercial.com)

**CONTRACTOR**



**ALEC ZOCHER**

847.297.4200

[info@pdbgroupp.com](mailto:info@pdbgroupp.com)

**BRENTON SCHRADER**

312.458.4392

[bschrader@hsacommercial.com](mailto:bschrader@hsacommercial.com)

*Above information is subject to verification and no liability for errors or omissions is assumed. Price is subject to change and listing may be withdrawn without notice.*